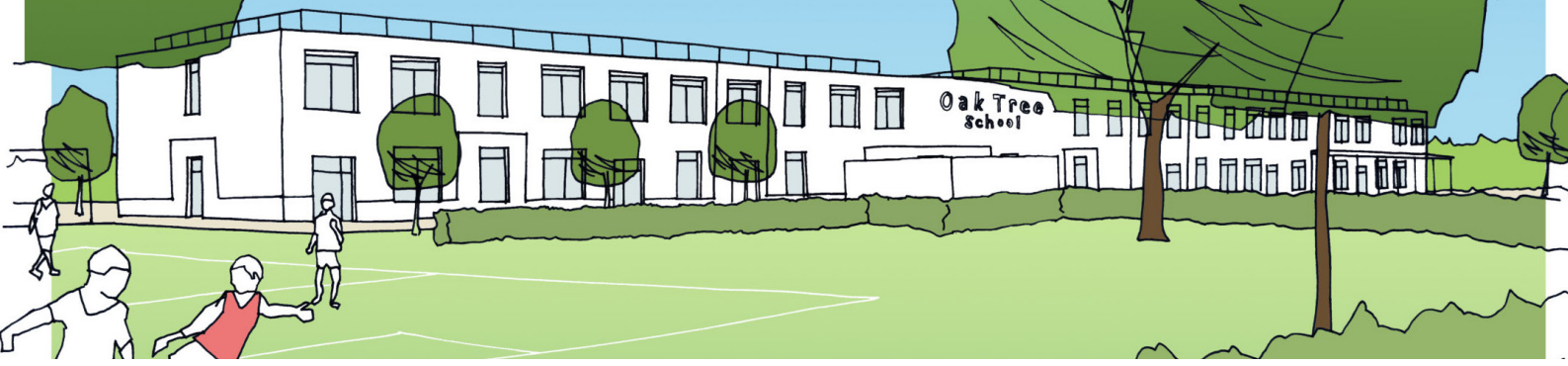


# OAK TREE SEN SCHOOL



The new Oak Tree SEN School will serve students from the Borough of Wokingham and neighbouring Reading, with a specialist school to encourage development, growth, and independence to pupils with Special Educational Need and Disabilities (SEND) requirements. The ambition is to deliver opportunity, diversity, and success for all young people in Wokingham and Reading and provide a safe and positive learning environment, ensuring that all children succeed. Maiden Erlegh Trust believe that children's potential should not be limited, and the new school, catering for students from Year 1 to Year 13 with Social, Emotional, and Mental Health (SEMH), and Autistic Spectrum Condition (ASC), will provide the additional support and dedicated facilities to allow these pupils to thrive.

Reds10 is currently developing plans on behalf of the Department for Education for a new SEND school for students in Wokingham and Reading Borough Councils. The school will be run by Maiden Erlegh Trust, who operate schools in the Berkshire area to meet the community's needs including the Maiden Erlegh School which was rated outstanding by Ofsted in 2020.

Reds10 are leading modular contractors who have a wealth of experience in delivering new school projects, meeting the Department for Education's high design and sustainability standards and their design team have been progressing plans for the new Oak Tree SEN School that responds to its setting and the educational requirements of the Trust.

The team is currently preparing a planning application and is keen to hear the views of the local residents to help inform the application to be submitted. The current proposals have been discussed with planning officers at Wokingham Borough Council and feedback received from residents will be considered alongside comments from the Council.

In summary, the scheme will include:

- Erection of a new 2 storey school building with specialist classrooms and ancillary facilities including dining areas, sensory rooms, and a multi-use hall;
- External sports play area;
- A school hall that will also be available for community use and hire outside of school hours;
- A one-way drop-off route at the front of the site with staff and visitor parking;
- Cycle parking;
- A surfaced Multi-Use Games Area;
- Contemporary design utilising natural materials to blend into the locality;
- Maintain connectivity to the existing allotments.

More information on the building and landscaping design, sustainability and project teams can be found on the project website: [www.reds10.com/OakTreeSENSchool](http://www.reds10.com/OakTreeSENSchool)

Given current Covid-19 restrictions, we are unable to hold an exhibition in person, but you will be able to submit any comments or questions that you have regarding the proposals at the website until 7th May 2021.